

# STEEL & SUSTAINABILITY 2022



LIFE  
IS MADE  
OF STEEL

## Brazil Steel Institute

---

Formed in 1963, the objectives of the Brazil Steel Institute are to increase the competitiveness of the Brazilian steel market and carry out a variety of activities, such as studies, research, and representation in both the public and private sphere. The Institute has since maintained a commitment to sustainable development and the demands of society, which is reflected in sustainable actions based on economic, social, and environmental pillars.

## Associated Companies

---

AÇO VERDE DO BRASIL - AVB  
APERAM SOUTH AMERICA  
ARCELORMITTAL AÇOS LONGOS  
ARCELORMITTAL TUBARÃO  
COMPANHIA SIDERÚRGICA DO PECÉM - CSP  
GERDAU AÇOMINAS S.A.  
GERDAU S.A.  
GERDAU AÇOS LONGOS S.A.  
SIDERÚRGICA NORTE BRASIL S.A. - SINOBRAS  
TERNIUM BRASIL  
USIMINAS  
VALLOUREC SOLUÇÕES TUBULARES DO BRASIL S.A.  
VILLARES METALS S.A.

● ● ● The Brazilian Steel Industry | 2021



**31** STEEL MILLS

**Steel Producer Sites:**  
15 integrated parks  
and 16 semi-integrated  
parks administered by  
12 groups.



**104.4**  
billions

**Net Revenue:**  
R\$ 104.4 billions



**19.7**  
billions

**Taxes Paid:**  
R\$ 19.7 billions



**51.0**  
millions

**Installed Capacity:**  
51.0 millions t/year of crude  
steel at the end of 2020



**9<sup>th</sup>** RANKED PRODUCER

**9<sup>th</sup> Ranked producer  
in Global Ranking**

*Production (t of crude steel):*  
Brazil = 31.4 million tonnes  
World = 1,877.3 million tonnes  
1.7% (Brazil/World)

*Latin America = 56.0 million tonnes*  
56.1% (Brazil/Latin America)



**103** thousand

**Collaborators:**  
Current company  
workforce: 64,569  
Collaborators  
Subcontractors: 38,739



**64.6**  
billions

**Investment:**  
R\$ 64.6 billions in  
investments between  
2008 and 2020



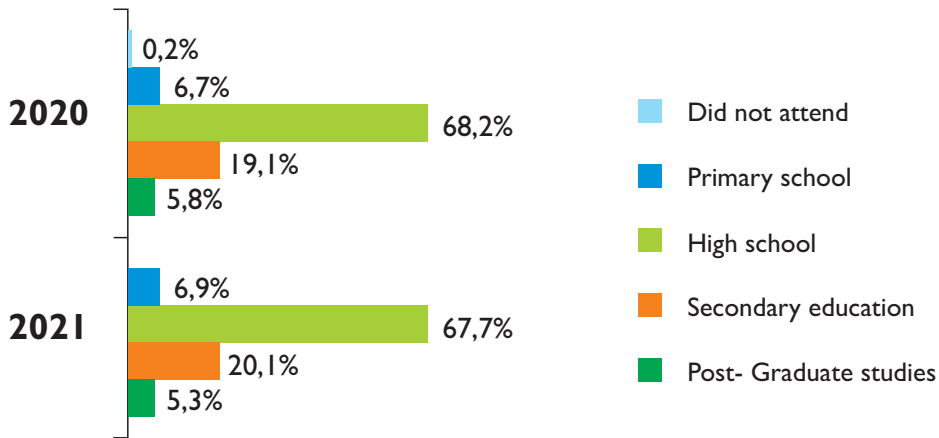
## COLLABORATORS

In line with best practices for sustainability in business management, the sector also maintains development programs focused on keeping competencies up-to-date and retaining talent.

Number of Collaborators / Specification	2021
Total company collaborators	70.569
Subcontractors	49.412
<b>Total collaborators</b>	<b>119.981</b>

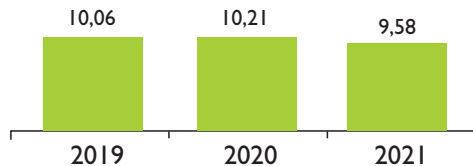
Note: Market data.  
Source: Brazil Steel Institute

## CURRENT COMPANY COLLABORATORS BY EDUCATION LEVEL

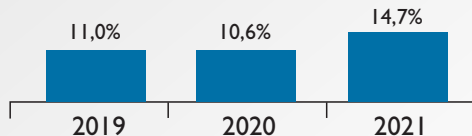


Note: Total numbers for companies associated with Brazil Steel Institute for the years shown.  
Source: Brazil Steel Institute

## AVERAGE TIME SPENT AT COMPANY (YEARS)\*



## TURNOVER RATE

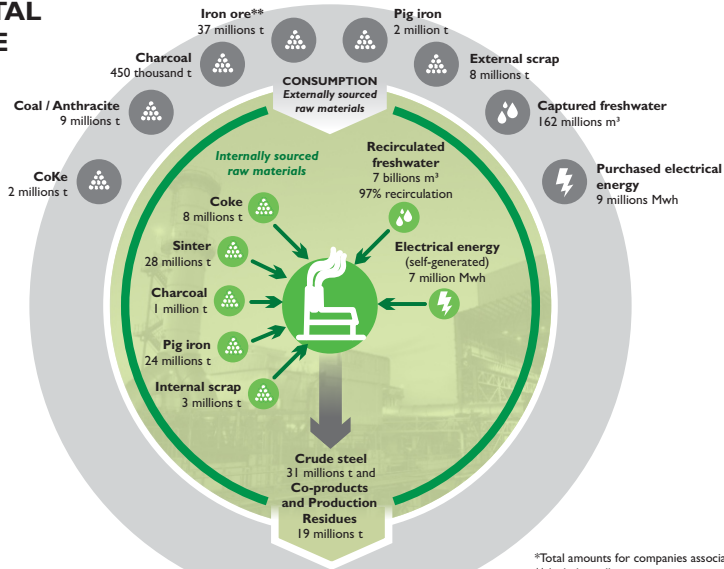


\* Estimate calculated using weighted average for the central point of each range, taking the lowest point of the highest range into consideration.

Note: Total amounts for companies associated with Brazil Steel Institute for the years shown.  
Source: Brazil Steel Institute

# ENVIRONMENTAL PERFORMANCE IN 2021

## FLOW OF MATERIALS ENTRY AND EXIT\*

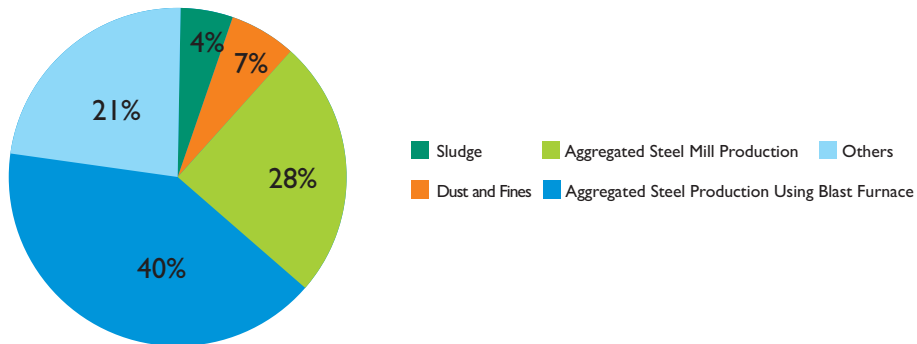


\*Total amounts for companies associated with Brazil Steel Institute in 2020.  
\*\* Includes pellets

Source: Brazil Steel Institute



## GENERATION OF CO-PRODUCTS AND WASTE BY TYPE (2021)

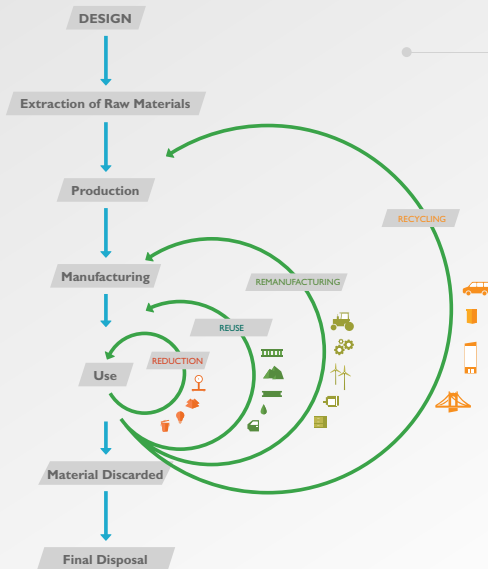


\*Total amounts for companies associated with Brazil Steel Institute in 2021.



# STEEL AND THE CIRCULAR ECONOMY

Recently, a new concept has emerged with a significant impact on the steel industry's agenda: the circular economy. Inherently regenerative and restorative, the concept of a circular economy aims to eliminate waste by keeping materials in use for as long as possible, thereby providing society with economic, social, and environmental benefits.



## BENEFITS OF A CIRCULAR ECONOMY

- REDUCTION IN CO2 EMISSIONS
- PRESERVATION OF RAW MATERIALS
- ENERGY EFFICIENCY
- INNOVATION
- JOB CREATION
- DURABLE PRODUCTS

**LINEAR**  
**ECONOMY**  
**X**  
**CIRCULAR**  
**ECONOMY**

## REDUCTION

Reduction in amount of raw materials and electricity used in product and product weight reduction. In 2021, 45% of the consumption of electrical energy in steelworks was self-generated.

## REUSE

Reuse of materials or products classified as durables and extension in use of product post-consumption while maintaining the same function that it previously performed.

## RECYCLING

Steel is the world's most recyclable material. It can be continuously recycled without a reduction in quality. 10 million tons of steel scrap were recycled in 2021.

## REMANUFACTURING

Remanufacturing transforms used and/or defective products into new products with a new life cycle.

FOLLOW BRAZIL STEEL INSTITUTE ON SOCIAL MEDIA:



**STEEL &  
SUSTAINABILITY**  
2022

BRAZIL  
**STEEL** INSTITUTE



[www.acobrasil.org.br](http://www.acobrasil.org.br)